



FOCUS

HOSPITALITY

2017

PRODUCTS GROUP INTERNATIONAL, LLC



Frank & Ron Hotel-Motel Supply, Inc.

888.854.6367

**Orders and Quotation Requests to:
info@motelsupplies.com**



Focus Products continues to partner with leading worldwide hotel chains and brands. We work closely with hotels, designers, distributors and management companies to develop products that enhance the guests' experience and provide unique benefits to the property. To learn more about current property specifications, new product developments, or to design a custom curtain for your hotel, please contact one of our knowledgeable sales representatives.





TABLE OF CONTENTS

SHOWER CURTAINS

Hookless®	4-25
It's A Snap!® Liner	15
One PLANET™	22-23
hooked™	26-30

SHOWER RODS

The Crescent Rod®	32
The Oval™ Rod	34
The Arc® Bar	35

COLLECTIONS

Bathroom	36-41
Guest Room Trays	42
Barware	43

GUEST ROOM

Room Dividers	44
Closet Drapery	45
Sure Fit® Mattress Pads	46

BANQUET & EXTENDED STAY

Sure Fit® Table Covers	47
Coffee Service	48
Cookware	50-51

STORAGE & SHELVING

Shelving Kits	53-54
Shelves, Posts, Panels	55-56
Security Cages	57

INDEX/USE & CARE	58-61
-----------------------------	--------------

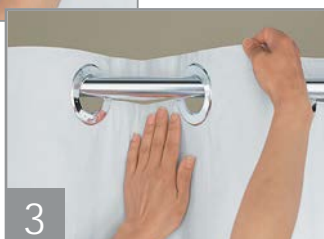


Hookless®

The increased efficiency to install and remove an original Hookless® shower curtain saves housekeeping labor, time and costs while maintaining your guests' bathrooms.

It's A Snap!® polyester liners with magnets also increase the efficiency and ease of installing or removing each replacement liner during regular wash and care. It's A Snap!® polyester liners with magnets give housekeepers the ability to launder without the need to remove the entire shower curtain.

Install a Hookless® Shower Curtain



Scan this QR code to view the Hookless® instructional video



Hookless® Saves Money!

Using the original Hookless® shower curtains, housekeeping will save time, which saves properties money.

Install/Removal time for a Hookless® Shower Curtain without a liner: 45 secs x 2 = 1 min 30 secs

Install/Removal time for a standard curtain with hooks without a liner: 5 mins x 2 = 10 mins

Total time savings for each install/removal with Hookless® Shower Curtain vs. standard curtain...

8 MINUTES AND 30 SECONDS FASTER!

Number of Install/Removals per room for laundering each year - 12 times.

Time savings for install/removal with Hookless® Shower Curtain

(102 minutes or 1.7 hours @ \$10.00 per hour)

\$17.00 per room labor annually x 200 rooms

\$3400 SAVINGS PER YEAR

at a 200 room property using Hookless® Shower Curtains



this does not include the savings achieved by using It's A Snap!® snap-in liners vs standard liners.

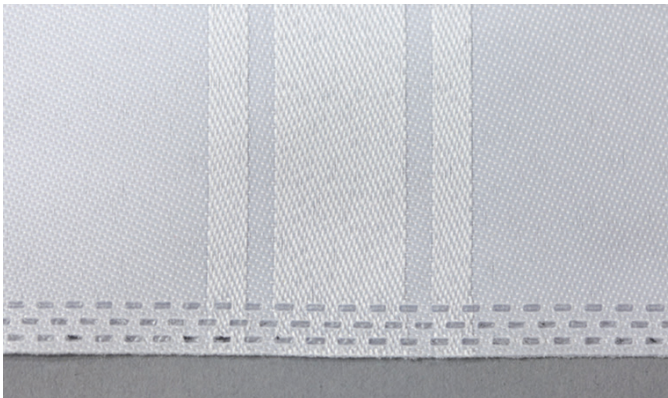
FEATURES, BENEFITS & OPTIONS



PATENTED FLEX-ON® RINGS

Patented Flex-On® rings are the signature feature of the original Hookless® shower curtain. They are available in finishes ranging from chrome-plated, to matching colors, or even a concealed ring option. Flex-On® rings are engineered to:

- Slide on and off virtually any shower rod with ease
- Deliver long-term durability
- Be machine washable and withstand the frequent laundering of a hotel property



BOTTOM ULTRASONIC CUT

The unique stitch-free hem at the bottom of our shower curtains and liners allow water to run off easily, which reduces the chance for mold and mildew formation. The ultrasonic cut is included on our single-ply fabric curtains and all It's A Snap!® polyester liners.



TRANSLUCENT WINDOW

Enhance your guests' shower experience with our optional translucent window feature, which allows greater light into the shower enclosure and provides an increased sense of security. Available in sheer voile polyester or vinyl.



IT'S A SNAP!® POLYESTER LINER

Your shower curtain and liner become one with our optional It's A Snap!® polyester liner with magnets. The durable snap system allows for rapid removal and attachment of the liner for frequent laundering. Corner weighted magnets help hold the shower curtain liner in place and keeps water from splashing out. Liners are available in machine washable polyester or One PLANET™ RePET and PEVA vinyl alternatives.

CORAL CURTAIN

The Coral curtain is made of 100% polyester fabric embellished with a double weaved puffed coral pattern, to give your bathroom a polished look. The sheer voile window adds to the fresh, airy feeling. The coral pattern coordinates with many top of bed programs. Features chrome raised Flex-On® rings and It's A Snap!® polyester liner with magnets.



TREE BRANCH CURTAIN

The overlapping tree branch pattern in neutral shades give this curtain depth. The natural feel will compliment stone or wood materials. Made of 100% polyester with sheer voile window and matching Flex-On® rings. Includes It's A Snap!® polyester liner with magnets.

Style	Model #	Color	Size	Window	Flex-On® Ring	Repl. Liner
TREE BRANCH	HBH47TB18	Taupe	71" x 77"	Sheer Poly	Matching Flat	HBH40SL0157
CORAL	HBH47CJ01	White	71" x 77"	Sheer Poly	Chrome Raised	HBH40SL0157



DEVAN CURTAIN

Our Devan curtain is a large scale printed plaid curtain that also has a double panel window made from sheer voile fabric. It combines all the features of having a window but with a more fashionable look! Features chrome raised Flex-On® rings and It's A Snap!® polyester liner with magnets.



WAVES CURTAIN

Waves features a two toned printed wave pattern in white with grey and black print. Made of 100% polyester. Features chrome raised Flex-On® rings and It's A Snap!® polyester liner with magnets.

Style	Model #	Color	Size	Window	Flex-On® Ring	Repl. Liner
DEVAN	HBH49DWN68SL77	Purple Print	71" x 77"	Double Poly	Chrome Raised	HBH40SL0157
WAVES	HBH49WAV01SL77	White w/ Grey	71" x 77"	Sheer Poly	Chrome Raised	HBH40SL0157

SHIMMY SQUARE CURTAIN

Shimmy Square is a unique sheer and solid check weave pattern, constructed of 100% polyester. Check weave textured pattern extends through the sheer voile window for added style. Features chrome raised Flex-On® rings and It's A Snap!® polyester liner with magnets.



WELLINGTON CURTAIN

Add a pop of color and freshen up your bathroom with the Wellington curtain. It features a taupe color block pattern on 100% polyester fabric with a coordinating satin trim. Includes It's A Snap!® polyester liner with magnets and matching Flex-On® rings.

Style	Model #	Color	Size	Window	Flex-On® Ring	Repl. Liner
SHIMMY SQUARE	HBH65D201X	White	71" x 77"	Textured	Chrome Raised	HBH40SL0157
SHIMMY SQUARE	HBH65D205X	Beige	71" x 77"	Textured	Chrome Raised	HBH40SL0557
WELLINGTON	HBH40WEL05SL74	Taupe Print	71" x 74"	Sheer Poly	Matching Flat	HBH40SL0154
WELLINGTON	HBH40WEL05SL77	Taupe Print	71" x 77"	Sheer Poly	Matching Flat	HBH40SL0157



BROOKS CURTAIN

Brooks combines a blue color block pattern with a coordinating satin trim above the sheer voile window. Includes It's A Snap!® polyester liner with magnets and matching Flex-On® rings.



DOUBLE H CURTAIN

The Double H curtain, a brand standard for many of the leading hotels, is a ½" herringbone weave, constructed of 100% polyester. Features chrome raised Flex-On® rings and It's A Snap!® polyester liner with magnets.

Style	Model #	Color	Size	Window	Flex-On® Ring	Repl. Liner
BROOKS	HBH49CBK01SL77	Blue Print	71" x 77"	Sheer Poly	Matching Flat	HBH40SL0157
DOUBLE H	HBH53DTB01CR	White	71" x 74"	Sheer Poly	Chrome Raised	HBH40SL0154
DOUBLE H	HBH53DTB01CRX	White	71" x 77"	Sheer Poly	Chrome Raised	HBH40SL0157
DOUBLE H	HBH53DTB05CR	Beige	71" x 74"	Sheer Poly	Chrome Raised	HBH40SL0554
DOUBLE H	HBH53DTB05CRX	Beige	71" x 77"	Sheer Poly	Chrome Raised	HBH40SL0557

STRATUS CURTAIN

Stratus features a unique wood-grain jacquard weave in a neutral palette. Made of 100% polyester and accented with bronze-finish Flex-On® rings and matching translucent window. Includes It's A Snap!® polyester liner with magnets



MADISON CURTAIN

Building upon one of our best-selling curtains, we've upgraded the Litchfield curtain with a sheer voile window. The Madison is a rectangle pattern fabric made of 100% polyester. Features matching Flex-On® rings and weighted corner magnets. It's A Snap!® liner available as an optional feature.

Style	Model #	Color	Size	Window	Flex-On® Ring	Repl. Liner
STRATUS	HBH22MYS01SL	Brown-Multi	71" x 77"	Sheer Poly	Bronze Raised	HBH40SL0557
MADISON	HBH43MYS01	White	71" x 74"	Sheer Poly	Matching Flat	No Liner
MADISON	HBH43MYS0177	White	71" x 77"	Sheer Poly	Matching Flat	No Liner
MADISON	HBH43MYS01SL77	White	71" x 77"	Sheer Poly	Matching Flat	HBH40SL0157
MADISON	HBH43MYS05	Beige	71" x 74"	Sheer Poly	Matching Flat	No Liner
MADISON	HBH43MYS0577	Beige	71" x 77"	Sheer Poly	Matching Flat	No Liner



White/White

The Escape collection has been a mainstay and consistent top seller among our shower curtains. The simple elegance of the Escape curtain makes it an easy match for many bathroom décors.

ESCAPE CURTAIN

Form meets function with the Escape shower curtain program. Satin accent stripes enhance the low maintenance of the 100% polyester plainweave fabric. Features chrome raised Flex-On® rings and It's A Snap!® polyester liner with magnets.



White/Black

Style	Model #	Stripe Color	Size	Window	Flex-On® Ring	Repl. Liner
ESCAPE WHITE	HBH40E257	White	71" x 74"	Sheer Poly	Chrome Raised	HBH40SL0154
ESCAPE WHITE	HBH40MYS0101SL77	White	71" x 77"	Sheer Poly	Chrome Raised	HBH40SL0157
ESCAPE WHITE	HBH40MYS0110SL74	Black	71" x 74"	Sheer Poly	Chrome Raised	HBH40SL0154
ESCAPE WHITE	HBH40MYS0110SL77	Black	71" x 77"	Sheer Poly	Chrome Raised	HBH40SL0157
ESCAPE BEIGE	HBH40E258	Beige	71" x 74"	Sheer Poly	Chrome Raised	HBH40SL0554
ESCAPE BEIGE	HBH40MYS0505SL77	Beige	71" x 77"	Sheer Poly	Chrome Raised	HBH40SL0557
ESCAPE SAND	HBH40ES221	Brown	71" x 74"	Sheer Poly	Chrome Raised	HBH40SL0554
ESCAPE SAND	HBH40MYS0529SL77	Brown	71" x 77"	Sheer Poly	Chrome Raised	HBH40SL0557
ESCAPE WHITE	HBH40ES220	Brown	71" x 74"	Sheer Poly	Chrome Raised	HBH40SL0154
ESCAPE WHITE	HBH40MYS0129SL77	Brown	71" x 77"	Sheer Poly	Chrome Raised	HBH40SL0157

CUSTOM ESCAPE CURTAIN

We offer the ability to customize the key visual details to make the Escape truly unique to your property.

Customize:

- Fabric Color & Window Style
- Curtain Size & Flex-On® Ring Finish
- 1/4" Trim Color & It's A Snap!® Liner



Custom Escape



Beige/Beige



Sand/Brown



White/Brown

SPA CURTAIN COLLECTION

Inspired by the calming and relaxing nature of a retreat, we created a collection around lofty and luxurious fabrics common to spa getaways. Each of the curtains in the Spa collection is made of the best fabrics and have all of the added options. The Spa collection curtains feature translucent windows, Flex-On® rings and It's A Snap!® polyester liners with magnets.



REFLECTION

A luxurious spa-like appearance in coupled with the long-term durability of 100% polyester in the Reflection shower curtain. Features chrome raised Flex-On® rings and It's A Snap!® polyester liner with magnets.



MINI WAFFLE

The petite spa-like pattern of our Mini Waffle curtain is constructed of 100% polyester and features the concealed ring header for a sleek appearance. Includes It's A Snap!® polyester liner with magnets.



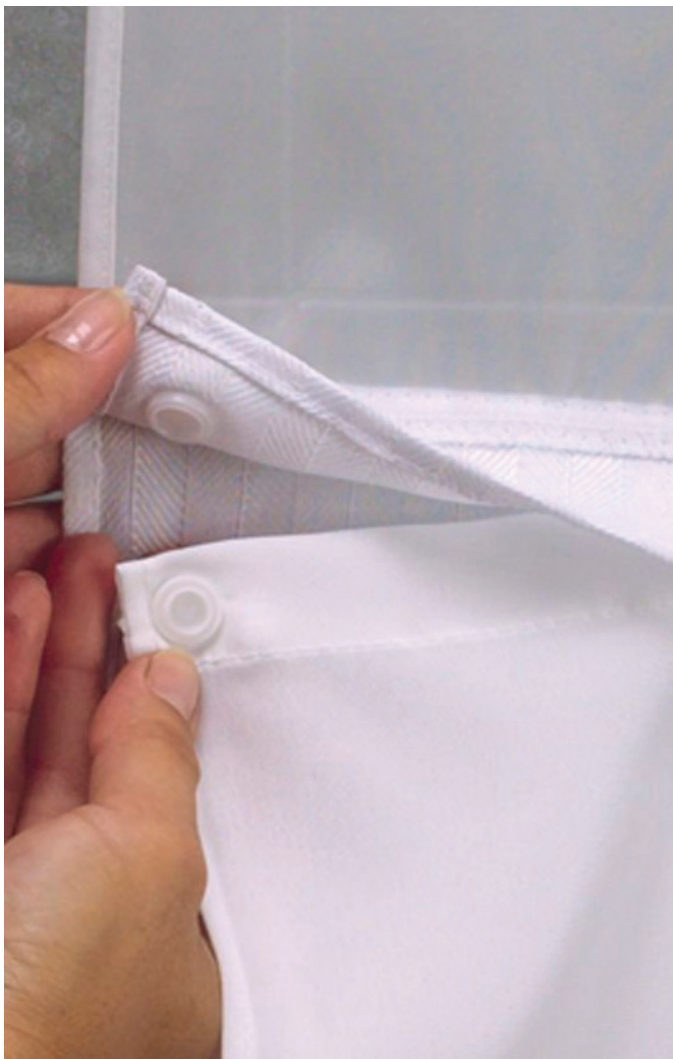
PIQUE WAFFLE

This curtain utilizes the classic pique waffle fabric. It is made of 100% polyester to create a luxurious and durable curtain that will look great in any guest's bathroom. Features brushed raised Flex-On® rings and It's A Snap!® polyester liner with magnets.

Style	Model #	Color	Size	Window	Flex-On® Ring	Repl. Liner
REFLECTION	HBH89MYS01SL77	White	71" x 77"	Sheer Poly	Chrome Raised	HBH40SL0157
MINI WAFFLE	HBH52H101X	White	71" x 77"	Sheer Poly	Ring Concealing Header	HBH40SL0157
PIQUE WAFFLE	HBH52D401X	White	71" x 77"	Sheer Poly	Brushed Raised	HBH40SL0157

IT'S A SNAP!® LINERS

We have provided housekeeping with a more efficient way to replace shower curtain liners. It's A Snap!® polyester liners with magnets are more accessible and detachable, which makes wash and care a less labor-intensive process.



PEVA Liner

REPET AND PEVA IT'S A SNAP!® LINERS



Features & Benefits:

- The ultrasonic cut technology is heat sealed, creating a flat and seamless bottom hem. This promotes water repellency and more efficient water run-off, ultimately reducing the ability for mildew to form.
- It's A Snap!® polyester liners with magnets increase the life of the shower curtain by allowing the liners to be washed separately and more often than the decorative curtain.
- Magnetic bottom helps hold shower curtain liner in place and keeps water from splashing out.

Style	Model #	Color	Size	Fits Curtain
POLYESTER LINER	HBH40SL0154	White	70" x 54"	71" x 74" or 71" x 72"
POLYESTER LINER	HBH40SL0157	White	70" x 57"	71" x 77"
POLYESTER LINER	HBH40SL0554	Beige	70" x 54"	71" x 74" or 71" x 72"
POLYESTER LINER	HBH40SL0557	Beige	70" x 57"	71" x 77"
REPET LINER	HBH19SL0157	White	70" x 57"	71" x 77"
PEVA LINER	RBH14HH12	Frost	70" x 54"	71" x 74" or 71" x 72"
PEVA LINER	HBH14SL0957	Frost	70" x 57"	71" x 77"



MYSTERY CURTAIN

Constructed of our subtle plainweave 100% polyester fabric, the Mystery shower curtain provides the added feature of a translucent voile window to allow light into the shower. Features matching Flex-On® rings and weighted corner magnets.



ILLUSION CURTAIN

The Illusion shower curtain combines the sleek simplicity of our plainweave 100% polyester fabric with many valuable features. Features include translucent window, chrome raised Flex-On® rings and It's A Snap!® polyester liner with magnets.

Style	Model #	Color	Size	Window	Flex-On® Ring	Repl. Liner
MYSTERY	HBH40MYS0174	White	71" x 74"	Sheer Poly	Matching Flat	No Liner
MYSTERY	HBH49MYS01X	White	71" x 77"	Sheer Poly	Matching Flat	No Liner
MYSTERY	HBH40MYS0574	Beige	71" x 74"	Sheer Poly	Matching Flat	No Liner
MYSTERY	HBH49MYS05X	Beige	71" x 77"	Sheer Poly	Matching Flat	No Liner
ILLUSION	HBH49MYS01SL74	White	71" x 74"	Sheer Poly	Chrome Raised	HBH40SL0154
ILLUSION	HBH49MYS01SL77	White	71" x 77"	Sheer Poly	Chrome Raised	HBH40SL0157
ILLUSION	HBH49MYS05SL74	Beige	71" x 74"	Sheer Poly	Chrome Raised	HBH40SL0554
ILLUSION	HBH49MYS05SL77	Beige	71" x 77"	Sheer Poly	Chrome Raised	HBH40SL0557

THE MAJOR CURTAIN

The Major combines the subtle water-effect pattern of moiré on 100% polyester with the convenience of a bubble textured vinyl window. Features matching Flex-On® rings and weighted corner magnets.



VIEW FROM THE TOP CURTAIN

With a base fabric of 100% polyester plainweave and a clear vinyl window, the View from the Top shower curtain is an ideal solution. Features matching Flex-On® rings and weighted corner magnets.

Style	Model #	Color	Size	Window	Flex-On® Ring	Repl. Liner
THE MAJOR	HBH41BUB01WS	White	71" x 74"	Bubble Vinyl	Matching Flat	No Liner
THE MAJOR	HBH41BUB01W	White	71" x 77"	Bubble Vinyl	Matching Flat	No Liner
THE MAJOR	HBH41BUB05WS	Beige	71" x 74"	Bubble Vinyl	Matching Flat	No Liner
THE MAJOR	HBH41BUB05W	Beige	71" x 77"	Bubble Vinyl	Matching Flat	No Liner
VIEW TOP	HBH49PEH01	White	71" x 74"	Clear Vinyl	Matching Flat	No Liner
VIEW TOP	HBH49PEH05	Beige	71" x 74"	Clear Vinyl	Matching Flat	No Liner



LITCHFIELD CURTAIN

The top selling Litchfield curtain creates a visual effect of multiple rectangles. This 100% polyester curtain features matching Flex-On® rings and weighted corner magnets.

Also available in stall size - see page 21.



EMBOSSED MOIRÉ CURTAIN

Highlighted by a water-effect tone on tone pattern, the Embossed Moiré curtain is constructed of 100% polyester with matching Flex-On® rings and weighted corner magnets.

Style	Model #	Color	Size	Window	Flex-On® Ring	Repl. Liner
LITCHFIELD	HBH43LIT01	White	71" x 74"	No Window	Matching Flat	No Liner
LITCHFIELD	HBH43LIT01X	White	71" x 77"	No Window	Matching Flat	No Liner
LITCHFIELD	HBH43LIT05	Beige	71" x 74"	No Window	Matching Flat	No Liner
LITCHFIELD	HBH43LIT05X	Beige	71" x 77"	No Window	Matching Flat	No Liner
MOIRÉ	HBH01EBM01	White	71" x 74"	No Window	Matching Flat	No Liner
MOIRÉ	HBH01EBM01X	White	71" x 77"	No Window	Matching Flat	No Liner
MOIRÉ	HBH01EBM05	Beige	71" x 74"	No Window	Matching Flat	No Liner
MOIRÉ	HBH01EBM05X	Beige	71" x 77"	No Window	Matching Flat	No Liner



VICTORIAN STRIPE CURTAIN

Based on a classic 7/8" satin stripe fabric, this pattern coordinates with the top of the bed in many guestrooms. This 100% polyester curtain brings a traditional elegance to the décor of the guest bathroom. Features matching patented Hookless® Flex-On® rings and weighted corner magnets.



PLAINWEAVE CURTAIN

The classic look of the full panel plainweave fabric curtain provides an easy maintenance solution for any guest bath. Made of 100% polyester. Features matching patented Hookless® Flex-On® rings and weighted corner magnets. Available in white or beige and 74" or 77" lengths.

Also available in 80" ADA size - see page 21.



ENGLEWOOD CURTAIN

The dobby diamond pattern brings depth and texture to the Englewood curtain. Made of 100% polyester for easy maintenance. Features matching patented Hookless® Flex-On® rings and weighted corner magnets. Available in 74" or 77" lengths.

Style	Model #	Color	Size	Window	Flex-On® Ring	Repl. Liner
VICTORIAN STRIPE	HBH35VIC0177	White	71" x 77"	No Window	Matching Flat	No Liner
PLAINWEAVE	HBH40PLW01	White	71" x 74"	No Window	Matching Flat	No Liner
PLAINWEAVE	HBH40PLW01X	White	71" x 77"	No Window	Matching Flat	No Liner
PLAINWEAVE	HBH40PLW05	Beige	71" x 74"	No Window	Matching Flat	No Liner
PLAINWEAVE	HBH40PLW05X	Beige	71" x 77"	No Window	Matching Flat	No Liner
ENGLEWOOD	HBH44ENG01	White	71" x 74"	No Window	Matching Flat	No Liner
ENGLEWOOD	HBH44ENG01X	White	71" x 77"	No Window	Matching Flat	No Liner

VINYL & NYLON CURTAINS

All the time saving benefits of Hookless® shower curtains, made with more economical materials.



PIN DOT CURTAIN

An update to the traditional vinyl curtain, the Pin Dot curtain features a raised dot pattern. Constructed of 100% 8-gauge vinyl, this shower curtain easily wipes clean for long-term use.

- Matching flat Flex-On® rings
- Weighted corner magnets



VISION CURTAIN

Our standard 8-gauge vinyl Hookless® shower curtain is enhanced with a translucent vinyl window that allows light into the guest bath.

- Matching flat Flex-On® rings
- Vinyl Window



NYLON CURTAIN

Our original Hookless® Flex-On® rings add functionality to the traditional nylon curtain. Made of 100% nylon.

- Matching flat Flex-On® rings
- Weighted corner magnets

Style	Model #	Color	Size	Window	Flex-On® Ring	Repl. Liner
PIN DOT	HBH04PDT01	White	71" x 74"	No Window	Matching Flat	No Liner
PIN DOT	HBH04PDT01L	White	71" x 77"	No Window	Matching Flat	No Liner
PIN DOT	HBH04PDT05	Beige	71" x 74"	No Window	Matching Flat	No Liner
PIN DOT	HBH04PDT05L	Beige	71" x 77"	No Window	Matching Flat	No Liner
VISION	HBH08VIS01	White	71" x 74"	Clear Vinyl	Matching Flat	No Liner
VISION	HBH08VIS05	Beige	71" x 74"	Clear Vinyl	Matching Flat	No Liner
NYLON	HBH31LIN01	White	71" x 74"	No Window	Matching Flat	No Liner
NYLON	HBH31LIN05	Beige	71" x 74"	No Window	Matching Flat	No Liner

SPECIALTY SIZES

Focus Products is always looking for ways to improve the customer experience and become a complete source to fulfill all of our customers' needs. We have added a collection of special sized curtains to meet the increasing need for stall size and ADA approved showers.



**ADA SIZE CURTAIN:
PLAINWEAVE**

We created a 100% polyester plainweave curtain to meet the needs of ADA compliant showers. These curtains are sized to accommodate the larger shower opening. Features matching flat Flex-On® rings and weighted corner magnets.



**STALL SIZE CURTAIN:
10 GAUGE VINYL**

These cost conscious shower stall size curtains are a 10-gauge vinyl material with matching flat Flex-On® rings and weighted corner magnets.



**STALL SIZE CURTAIN:
LITCHFIELD**

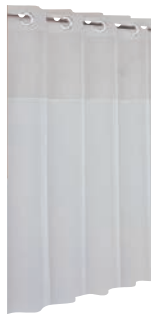
We now offer our top-selling Litchfield pattern for shower stalls. Made of 100% polyester with matching Flex-On® rings and weighted corner magnets.

Style	Model #	Color	Size	Window	Flex-On® Ring	Repl. Liner
ADA PLAIN	HBH40PLW01L	White	71" x 80"	No Window	Matching Flat	No Liner
STALL VINYL	HBH10GA014274	White	42" x 74"	No Window	Matching Flat	No Liner
STALL VINYL	HBH10GA054274	Beige	42" x 74"	No Window	Matching Flat	No Liner
STALL LITCHFIELD	HBH43LIT01SX	White	42" x 74"	No Window	Matching Flat	No Liner



ONE PLANET™ SHOWER CURTAINS

Focus Products introduced the One PLANET™ brand to bring a comprehensive line of environmentally responsible products to the hospitality industry. The goal of the One PLANET™ brand is to help sustain the world in which we live and operate. One PLANET™ products are a hybrid of recycled, consciously manufactured and biodegradable products for the guestroom and bath. Choose from our in-stock product assortment or partner with us to develop a custom program to meet your specific needs.

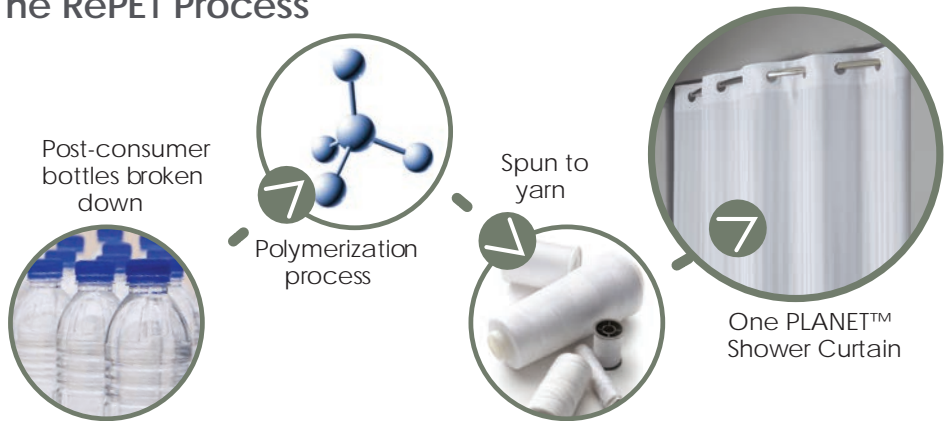


Shower Curtains made from RePET

RePET = Recycled polyethylene terephthalate

- PET is the material used to make standard water bottles.
- Each RePET One PLANET™ shower curtain saves 60 water bottles from entering the world's landfills.
- That is the equivalent of one standard kitchen trash bag's worth of water bottles per shower curtain.
- The durability you have come to expect from Hookless® shower curtains, with an environmental sensibility.

The RePET Process



Shower Curtains made from PEVA

PEVA = Polyethylene vinyl acetate

- A responsible alternative to PVC, PEVA is manufactured without chlorine, which is harmful to the environment.
- A moderately priced, yet durable material option.
- Lightweight and easy to clean, our Hookless® PEVA shower curtains are waterproof and naturally anti-microbial.



ALEXANDRIA CURTAIN

Alexandria is a recycled, yet durable, Hookless® shower curtain in a basketweave pattern.

- Translucent poly-voile window
- Chrome raised Flex-On® rings
- Includes It's A Snap!® RePET liner with magnets



DAYTONA CURTAIN

The Daytona is the newest addition to the One PLANET™ collection. This sustainable and durable Hookless® shower curtain has a ½" checkboard pattern.

- Translucent poly-voile window
- Matching flat Flex-On® rings
- Weighted corner magnets



PEVA CURTAIN

Our PEVA program is a green alternative to traditional vinyl. Manufactured without the use of chlorine, PEVA delivers a durable Hookless® shower curtain – responsibly.

- Matching flat Flex-On® rings
- Made of 5-gauge PEVA

Style	Model #	Color	Size	Window	Flex-On® Ring	Repl. Liner
ALEXANDRIA	HBH20MPT01SL	White	71" x 77"	Sheer Poly	Chrome Raised	HBH19SL0157
DAYTONA	HBH72PTM0177	White	71" x 77"	Sheer Poly	Matching Flat	No Liner
5-GA PEVA	HBH16SND0174	White	71" x 74"	No Window	Matching Flat	No Liner
5-GA PEVA	HBH16SND0974	Frost	71" x 74"	No Window	Matching Flat	No Liner
ONE PLANET™ IT'S A SNAP!® LINERS						
PEVA LINER	RBH14HH12	Frost	70" x 54"			
PEVA LINER	HBH14SL0957	Frost	70" x 57"			
REPET LINER	HBH19SL0157	White	70" x 57"			

Look for the  symbol for environmentally friendly products.

DESIGN YOUR OWN HOOKLESS® CURTAIN

Work with our team to design a custom Hookless® shower curtain for your hotel. Focus works with designers at many of the major hotel chains to develop exclusive designs. Maybe you're inspired by your top of bed program, or your window drapery. Maybe you like one of our core designs, but would like to add additional features or create a custom size.



Inspire



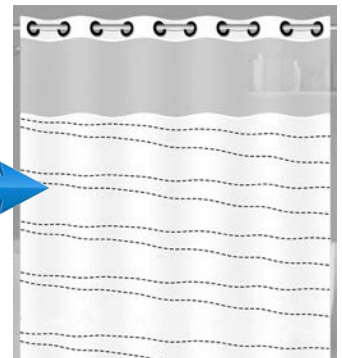
Design



Create

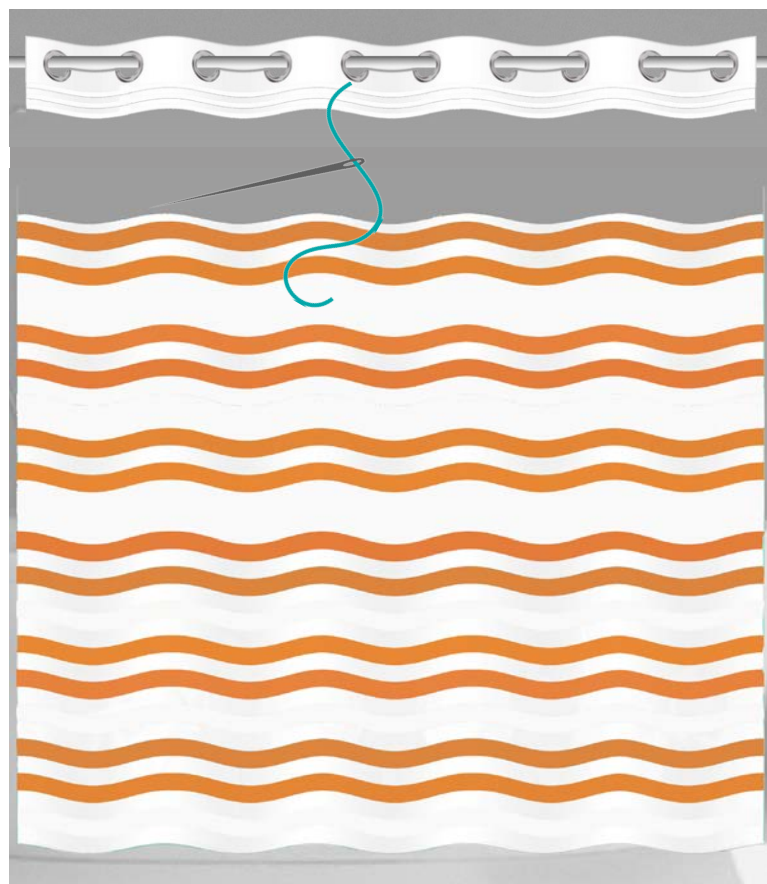
Features & Benefits:

- Design unique to your brand or property
- Low minimum order quantities
- Experienced team works with many of the leading hotel chains



ADD YOUR LOGO OR IMAGE

We can now custom print your logo or image onto a Hookless® shower curtain. Advertise your property or special events right on the shower curtain. You could also choose a local scene or landmark for that extra touch of originality. No MOQ's mean that you can create a custom experience for your newlyweds or VIP guests. Image is printed on a white Hookless® curtain with an optional sheer window.



YOUR MATERIAL

COM Hookless® Curtain:

- Select your material and sew onto Hookless® header
- Optional sheer voile window
- It's A Snap!® liner is available

If you've already sourced your desired material, but want the functionality and time savings of a Hookless® shower curtain, we can work with you to create a COM Hookless® curtain. Our US manufacturing partner can sew your material onto our patented Hookless® rings, giving you a one-of-a-kind design.



Poly Premium in Beige



Already the industry leader in the shower curtain category, Focus Products completes the curtain assortment by bringing the hooked™ collection to the hospitality market. This assortment covers everything from traditional opening price point vinyl to 100% polyester with key features and benefits (called Poly Premium). Every hooked™ shower curtain has an industry best triple reinforced header for stability. Focus Products innovates in this product category by introducing some of the premium elements of the original Hookless® shower curtains.



ESCAPE

One of our top selling Hookless® curtains is now available in a hooked™ version. Satin accent stripes enhance the low maintenance appeal of the 100% polyester plainweave fabric. Features a grommet header and poly-voile translucent window. Includes It's A Snap!® polyester liner with magnets.



ENGLEWOOD

This 100% polyester curtain features a dobby diamond pattern and includes a triple reinforced buttonhole header. Available in white or beige.



MINI CHECKERBOX

Our Mini Checkerbox curtain features a stylish checkerbox pattern and includes a triple reinforced header with buttonhole eyelets for added durability and lifespan. Made of 100% polyester.



ROLLER BALL HOOKS

Functional & attractive way to hang your hooked™ shower curtains. Glides effortlessly on the curtain rod.

Style	Model #	Color	Size	Window	Header	Repl. Liner
ESCAPE	HBG40ES0101	White	72" x 72"	Sheer Poly	Grommet	HBH40SL0154
ENGLEWOOD	HBB44ENG0172	White	72" x 72"	No Window	Buttonhole	No Liner
ENGLEWOOD	HBB44ENG0572	Beige	72" x 72"	No Window	Buttonhole	No Liner
CHECKERBOX	HBB72BOX0172	White	72" x 72"	No Window	Buttonhole	No Liner
CHECKERBOX	HBB72BOX0572	Beige	72" x 72"	No Window	Buttonhole	No Liner
DERBY HOOKS	HRB5BN	Brushed Finish				
DOUBLE HOOKS	RBHOOK-DB	Bright Finish				



BASIC NYLON

This 100% nylon oxford weave fabric is an upgraded water-resistant material. Features a triple reinforced buttonhole header and treated with an anti-microbial finish for easy cleaning. Available in white or beige.



6-GAUGE VINYL VISION CURTAIN

The 6-Gauge Vinyl Vision curtain is an updated version of the traditional shower curtain with the addition of a clear vinyl window. Features chrome plated copper grommets.

Style	Model #	Color	Size	Window	Header	Repl. Liner
BASIC NYLON	HBB31PLW0172	White	72" x 72"	No Window	Buttonhole	No Liner
BASIC NYLON	HBB31PLW0572	Beige	72" x 72"	No Window	Buttonhole	No Liner
VINYL VISION	HBG03VIS0172	White	72" x 72"	Clear Vinyl	Grommet	No Liner



**6-GAUGE
VINYL CURTAIN**

This 100% nylon oxford weave fabric is an upgraded water-resistant material. Features a triple reinforced buttonhole header and treated with an anti-microbial finish for easy cleaning. Available in white or beige.



**8-GAUGE
BASIC VINYL**

The 8-Gauge Basic Vinyl curtain is a mid-weight vinyl material. Features chrome plated copper grommets and treated with an anti-microbial finish for easy cleaning. Available in white or translucent frost color.



**10-GAUGE
BASIC VINYL**

This 10-Gauge Basic Vinyl curtain is constructed of a heavyweight vinyl for increased durability. Features chrome plated copper grommets and treated with an anti-microbial finish for easy cleaning. Available in white or beige.

STALL SIZE ALSO AVAILABLE

Style	Model #	Color	Size	Window	Header	Repl. Liner
6-GA VINYL	HBG03GA0172	White	72" x 72"	No Window	Grommet	No Liner
6-GA VINYL	HBG03GA0572	Beige	72" x 72"	No Window	Grommet	No Liner
8-GA BASIC	HBG08GA0172	White	72" x 72"	No Window	Grommet	No Liner
8-GA BASIC	HBG08GA0972	Frost	72" x 72"	No Window	Grommet	No Liner
10-GA BASIC	HBG10GA0172	White	72" x 72"	No Window	Grommet	No Liner
10-GA BASIC	HBG10GA0572	Beige	72" x 72"	No Window	Grommet	No Liner
10-GA STALL	HBG10GA013672	White	36" x 72"	No Window	Grommet	No Liner
10-GA STALL	HBG10GA053672	Beige	36" x 72"	No Window	Grommet	No Liner



POLY PREMIUM CURTAIN

This Poly Premium hooked™ curtain is made from 100% polyester plainweave fabric with the addition of a sheer voile window and chrome plated copper grommets.

Optional It's A Snap!® polyester liner available.



BASIC POLYESTER CURTAIN

The Basic Polyester hooked™ curtain is made of water-repellent 100% polyester plainweave fabric. A value-priced alternative to the nylon weave standard. Features a triple reinforced buttonhole header.

Style	Model #	Color	Size	Window	Header	Repl. Liner
POLY PREMIUM	HBG40MYS01	White	71" x 72"	Sheer Poly	Grommet	No Liner
POLY PREMIUM	HBG40MYS05	Beige	71" x 72"	Sheer Poly	Grommet	No Liner
POLY PREMIUM	HBG40MYS01SL	White	71" x 72"	Sheer Poly	Grommet	HBH40SL0154
POLY PREMIUM	HBG40MYS05SL	Beige	71" x 72"	Sheer Poly	Grommet	HBH40SL0554
BASIC POLY	HBB40PLW0172	White	72" x 72"	No Window	Buttonhole	No Liner
BASIC POLY	HBB40PLW0572	Beige	72" x 72"	No Window	Buttonhole	No Liner



CRESCENTSUITE™

Focus Products is pleased to introduce the Crescent Suite™ brand of products where innovative functionality meets superior design and quality. The Crescent Rod® and THE ARC® Shower Bar revolutionized the in-room shower experience and have become staples in the hospitality market. Building upon this success, Crescent Suite™ has been expanded to include The Oval™ Rod, the Double Curved Rod and the Crescent™ Clothesline Rod.



THE CRESCENT ROD®

The original curved rod innovation, The Crescent Rod® is made of rust resistant 1" round stainless steel tubing. Its one piece design gives extra strength, while the crescent shape offers a 9" arc. Our patented swivel brackets provide easy installation. Available in bright and brushed finishes. (Brackets and hardware included.)

Item	Description	Cs Pk
B60BS6	5' Bright Finish	6
B60BN6	5' Brushed Finish	6
C60BS	5' Bright Finish	1
C60BN	5' Brushed Finish	1
B72BS6	6' Bright Finish	6
B72BN6	6' Brushed Finish	6

Also available in a reduced 6" arc:

B57BS6	5' Bright Finish	6
B57BN6	5' Brushed Finish	6

SWIVEL BRACKETS

Our patented swivel brackets are cast in zinc and make installing The Crescent Rod® simple. Hardware is included.

- # 22014 Bright Finish
- # 22015 Brushed Finish



COVER PLATES

Easy to install cover plates are available in bright or brushed to coordinate with the selected finish of The Crescent Rod®.

- # BKPLATEBS Bright Finish
- # BKPLATEBN Brushed Finish

THE CRESCENT™ CLOTHESLINE ROD

The added convenience of a retractable clothesline to our traditional Crescent™ rod offers the best of both worlds. A single bracket provides two functions in one mounted unit. The lightweight, yet strong nylon cord allows for the hanging of wet bathing suites, towels and other items, while easily retracting into the bracket when not in use. Available in bright or brushed finishes. (Brackets and hardware are included.)



Item	Description	Cs Pk
CLBS	Clothesline Bracket Bright	12 sets
CLBN	Clothesline Bracket Brushed	12 sets

Item	Description	Cs Pk
CL60BS6	5' Rod Bright	6



THE DOUBLE OVAL™ ROD

This versatile double design provides extra space to hang towels or other essentials within a 9" arc. The oval circumference of the rod prevents spinning and reduces friction while opening and closing the shower curtain. Constructed of quality stainless steel, our rods resist rust and are available in bright or brushed finishes. (Brackets and hardware are included.)

Item	Description	Cs Pk
DOV60BS6	5' Bright Finish	6



THE OVAL™ CURVED ROD

The same innovation as the original curved rod, designed with an oval circumference to prevent the rod from spinning. Available in bright or brushed finishes. (Brackets and hardware are included.)



THE OVAL™ ROD COVER PLATES

- # BOVCPBS Bright Finish
- # BOVCPBN Brushed Finish

Item	Description	Cs Pk
BOV60BS6	5' Bright Finish	6
BOV60BN6	5' Brushed Finish	6
COV60BS	5' Bright Finish	1
COV60BN	5' Brushed Finish	1

Also available in a reduced 6" arc:

BOV57BS6	5' Bright Finish	6
BOV57BN6	5' Brushed Finish	6

THE ARC®

SHOWER BAR



THE ARC® SHOWER BAR

THE ARC® Shower Bar, made of durable aluminum, will not rust. This 1" wide slim bar design offers an 8" arc and can easily be cut to fit your needs. The compact wall brackets are mounted using 3 screws for extra strength. Available in chrome and brushed finishes. (Brackets and hardware are included.)

Item	Description	Case
HBA00KIT046	5' Chrome Finish	6
HBA00KIT036	5' Brushed Finish	6

REPLACEMENT WALL BRACKETS

THE ARC® Shower Bar wall brackets are cast from zinc & designed with 3 mounting holes to provide extra strength. (Hardware included.)

- # HBA00NCID97S Chrome Finish
- # HBA00NCID91 Brushed Finish



COVER PLATES

Decorative cover plates are available in both finishes to coordinate with THE ARC® Shower Bar wall brackets.

- # HBA00ARC97S Chrome Finish
- # HBA00ARC91 Brushed Finish



BATHROOM COLLECTIONS

Our collections add style and function to any hotel bathroom. Easily coordinate soap dishes, wastebaskets, tissue box covers, cotton containers, and amenity trays throughout collections. Our combination of style, quality materials, durability and ease of cleaning make Focus Products the ideal choice.

PARKER COLLECTION

Made of plastic with a hand painted finish, the Parker collection gives the look of an expensive brushed metal without the price tag.



Item #	Description	Dimensions	Cs Pk
BS-PK3	Soap Dish	4.1" x 3.1" x 0.8"	6
BS-PKVT	Amenity Tray	9.0" x 4.0" x 0.8"	6
BS-PK9	Boutique Tissue Cover	5.1" x 5.1" x 5.8"	6
BS-PK8	Wastebasket, 8 Qt.	7.1" dia x 9.8"	3



ZEN COLLECTION

Natural bamboo material and minimalistic lines bring a calm, relaxing feeling to the guest bath or spa area. Bamboo is environmentally friendly and durable. Coated with a clear lacquer for extra protection.



*Amenity Tray available in square or rectangle shape.

Item #	Description	Dimensions	Cs Pk
BS-ZEN3	Soap Dish	5.1" x 3.1" x 0.7"	6
BS-ZENVTS	Square Amenity Tray	5.5" x 5.1" x 1.2"	4
BS-ZENVT	Rectangle Amenity Tray	8.9" x 3.9" x 0.8"	4
BS-ZEN9	Boutique Tissue Cover	5.3" x 5.3" x 5.9"	4
BS-ZEN8	Wastebasket, 11 Qt.	9.1" T x 6.0" B x 11"	4



SOHO COLLECTION

The traditional styling of the Soho collection is brought to life in a mirror-finish stainless steel.

Add our polypropylene wastebasket liner(p37) for a clean and ecofriendly alternative to plastic bags.



Item #	Description	Dimensions	Cs Pk
BS-6003	Soap Dish	3.9" x 5.1" x 1.7"	3
BS-VT6	Amenity Tray	7.9" x 11.7" x 0.2"	6
BS-6001	Cotton Container	4.0"T x 3.5"B x 5.0"	3
BS-6009	Boutique Tissue Cover	5.0"T x 5.5"B x 5.8"	3
BS-92S	Flat Tissue Box Cover	9.8" x 2.3" x 5.0"	3
BS-6008	Wastebasket, 9 Qt.	9.8"T x 9.0"B x 12.1"	3



BASIC COLLECTION

Constructed of polished stainless steel, the Basic collection has clean lines that enhance the décor of guestrooms, bath and lobby areas.

Add our polypropylene wastebasket liner(p37) for a clean and ecofriendly alternative to plastic bags.

Item #	Description	Dimensions	Cs Pk
BS-3R	Soap Dish	4.0" x 5.4" x 0.8"	3
BS-VT20	Amenity Tray	9.7" x 5.2" x 0.5"	6
BS-1	Cotton Container	3.5"T x 3.4"B x 4.3"	3
BS-9	Boutique Tissue Cover	4.8" x 4.8" x 5.6"	3
BS-92S	Flat Tissue Box Cover	9.8" x 2.3" x 5.0"	3
BS-81M	Wastebasket, 9 Qt.	9.8"T x 6.7"B x 10.7"	6



PEWTER VEIL COLLECTION

Crafted from durable stainless steel, the Pewter Veil collection combines a brushed finish with decorative details.

Item #	Description	Dimensions	Cs Pk
BS-1003SS	Soap Dish	2.0" x 4.3" x 5.5"	3
BS-PRVT1	Amenity Tray	11.1" x 7.3" x 0.6"	6
BS-1001	Cotton Container	3.5"T x 3.9"B x 5.0"	3
BS-1009	Boutique Tissue Cover	5.0"T x 5.5"B x 5.8"	3
BS-1092S	Flat Tissue Box Cover	9.8" x 2.3" x 5.0"	3
BB-BS-1008	Wastebasket, 9 Qt. Pedest.	9.8"T x 9.0"B x 12.1"	6
BS-81B	Wastebasket, 9 Qt.	9.8"T x 6.7"B x 10.7"	6

PREMIER COLLECTION

The curved contemporary design of the Premier collection is constructed of brushed stainless steel delivering ease of cleaning and long-term durability.



Item #	Description	Dimensions	Cs Pk
BS-PR3R	Soap Dish	4.7" x 5.5" x 0.5"	3
BS-PRVT1	Amenity Tray	11.1" x 7.3" x 0.6"	6
BS-PR1	Cotton Container	4.3" x 4.3" x 4.2"	3
BS-PR9	Boutique Tissue Cover	5.6" x 5.3" x 5.3"	3
BS-1092S	Flat Tissue Box Cover	9.8" x 2.3" x 5.0"	3
BS-PR8L	Wastebasket, 11 Qt.	9.8"T x 9.0"B x 10.4"	3

SPA COLLECTION

Contemporary, angular styling is combined with durable poly-resin to provide a sleek collection of functional accessories to the guest bath.



Black Item #	White Item #	Description	Dimensions	Cs Pk
BS-SPA3B	BS-SPA3W	Soap Dish	3.5" x 5.1" x 0.9"	3
BS-SPAVTB	BS-SPAVTW	Amenity Tray	0.8" x 6.0" x 10.0"	3
BS-SPA1B	BS-SPA1W	Cotton Container	4.0"T x 3.1"B x 3.5"	3
BS-SPA9B	BS-SPA9W	Boutique Tissue Cover	5.8"T x 5.4"B x 5.8"	3
BS-SPA8B	BS-SPA8W	Wastebasket, 6 Qt.	7.9"T x 5.9"B x 8.9"	3



HAMILTON COLLECTION

Inspired by the appeal of a natural wood grain design, Hamilton features the rich look of wood with the durability of resin material.

Item #	Description	Dimensions	Cs Pk
BS-HM3	Round Soap Dish	3.8" dia x 0.8"	12
BS-HM3R	Rectangular Soap Dish	3.5" x 5.4" x 0.8"	12
BS-HMVT1	Amenity Tray	4.6" x 9.7" x 0.8"	4
BS-HM1	Cotton Container	3.2" x 4.8" x 3.0"	4
BS-HM9	Boutique Tissue Cover	5.6" x 5.8" x 5.8"	4
BS-HM8L	Wastebasket, 10 Qt.	6.5" x 9.2" x 10"	4



CERAMICS

Mix and match to create endless design possibilities! Choose from black or white high gloss ceramic accessories to complete your bath. Economical, yet stylish.

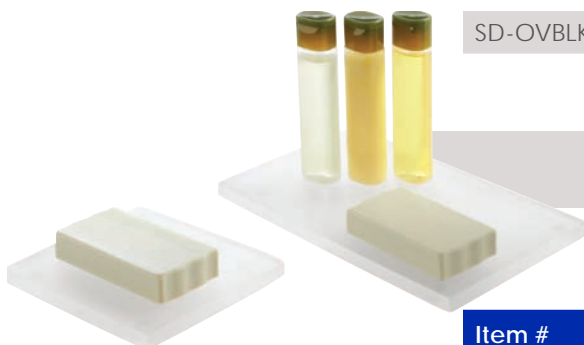
Black Item #	White Item #	Description	Dimensions	Cs Pk
BC-SDLK	SD-OVWHT	Soap Dish, Oval	4.4" x 5.6" x 1.1"	12
BC-ATBLK	AT-CERW	Amenity Tray	6.3" x 8.4" x 0.5"	12
BC-TBBLK	TB-CWH	Boutique Tissue Cover	5.1" x 5.1" x 6.0"	6



MS RESIN SOAP DISHES

Priced affordably, easy to clean and break resistant, you can't go wrong with these soap dishes.

Item #	Description	Dimensions	Cs Pk
SD-OVCLR	Oval Soap Dish, Clear	0.7" x 3.4" x 4.2"	36
SD-OVBK	Oval Soap Dish, Black	0.7" x 3.4" x 4.2"	36



ACRYLIC ACCESSORIES

Modern shapes with translucent white frosted finish will add style to your bath.

Item #	Description	Dimensions	Cs Pk
SD-ACFR	Frosted Soap Dish	3.5" x 3.5" x 0.3"	12
AT-ACFR	Frosted Amenity Tray	6.0" x 4.0" x 0.3"	12



SOAP PUMP

Brushed stainless steel soap pump perfect for guest bathroom or public bathroom. 13.5 ounce capacity.

Item #	Description	Dimensions	Cs Pk
BS-SOPUBN	Soap Pump	2.44" dia x 8.5"	6



WASTEBASKET LINERS

Replace unsightly plastic bags with our polypropylene wastebasket liner that fits all of our 9 and 11 quart metal wastebaskets.

Item #	Description	Dimensions	Cs Pk
BS-WPL1	Frost	9.7" T x 6.4" B x 10.1"	12
BS-WPL1B	Black	9.7" T x 6.4" B x 10.1"	12

GUESTROOM COLLECTIONS



THE MELROSE COLLECTION

The Melrose collection with the prestigious aesthetic and feel of quality leather made of durable resilient polyurethane. Focus Products' entrance into the premier requirements of the modern business traveler combines functionality with style. Partner with Focus to customize your design color or embossed logo.

**Additional Melrose items are available for special order. MOQ and lead times apply.*



MELROSE TRAYS & COFFEE CADDIES

In-room coffee service meets stylish presentation with our new leatherette finished trays and caddies. Contrasting stitching on black and coordinating stitching on brown.

Black Item #	Brown Item #	Description	Dimensions	Cs Pk
LT-MLB	LT-MLBR	Large Tray	16.2" x 14.2" x 2.4"	6
SDT-MLB	SDT-MLBR	Small Divided Tray	15.4" x 10.7" x 2.1"	6
CC-MLB	CC-MLBR	Condiment Caddy	9.5" x 5.3" x 2.2"	6
BS-ML9BA	BS-ML9BRA	Boutique Tissue Box Cover	6.2" x 5.4" x 5.4"	4
BS-ML8RDBA	BS-ML8RDBRA	Round Wastebasket, 10 Qt.	9.7" T x 7.2" B x 10.8"	4
BS-ML8TZB	BS-ML8TZBR	Trapezoid Wastebasket, 10 Qt.	9.1" T x 6.6" B x 11"	4
BS-WPL1B		Round Wastebasket Liner	9.7" T x 6.4" B x 10.1"	12
BS-WPTZ		Trapezoid Wastebasket Liner	9.1" T x 6.0" B x 10.8"	12



BRUSHED BARWARE

The double-walled construction provides durability and extended insulation. Sleek lines offer a clean contemporary look.

Item #	Description	Dimensions	Cs Pk
IB-DW3NH	Ice Bucket, 3 Qt.	6.8" dia x 7.5"	6
IT-1	7" Ice Tongs	7.0" x 0.5" x 0.1"	6
HT-2RB	Bar Tray	14.8" x 12.1" x 1.2"	12

SPA BARWARE COLLECTION

Make every room feel like your guest is staying in a 5 star suite! High gloss resin material in our coordinating Spa White and Spa Black colors are easy to clean and stylish.



Black Item #	White Item #	Description	Dimensions	Cs Pk
IB-SPA2B	IB-SPA2W	Ice Bucket, 2 Qt.	6.5" T x 5.5" B x 7.5"	3
BT-SPAB	BT-SPAW	Beverage Tray	13.3" x 10.5" x 1.8"	3
CC-SPAB	CC-SPAW	Condiment Caddy	3.5" x 4.0" x 8.1"	3



MELROSE TISSUE BOX COVER

A magnetized hinge bottom emphasizes ease and functionality.

MELROSE WASTEBASKET

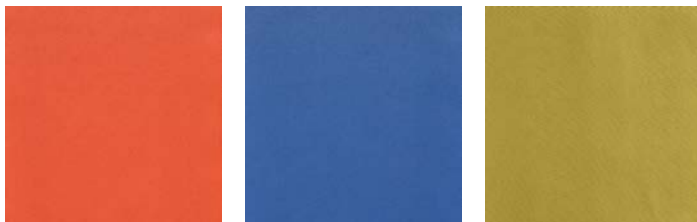
Superior stitching highlights executive-level quality. **FLAME RESISTANT.**





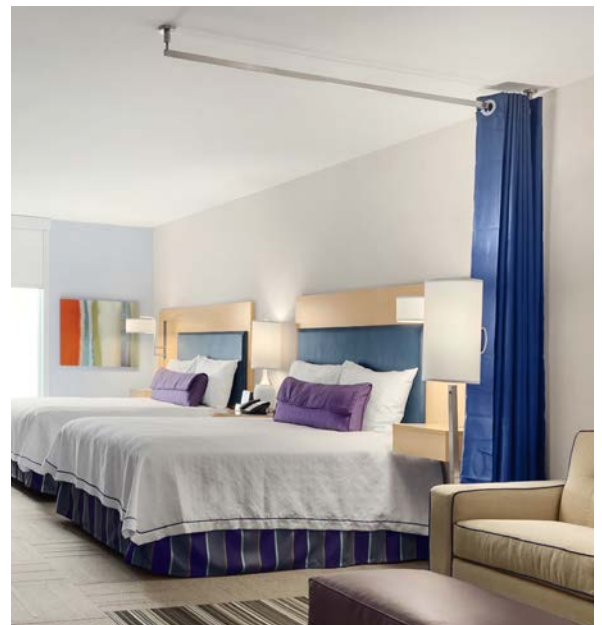
HOOKLESS® ROOM DIVIDERS

Give your space a sense of separation with new Hookless® room dividers. Great for extended stay properties, or double bed rooms, the Flex-On® rings slide effortlessly along the ceiling mounted rod, making it easy to expand or retract.



Features & Benefits:

- Hookless® Flex-On® rings make installation easy
- Made of 100% polyester blackout fabric for privacy
- Custom double sided grommet handle for finished look on both sides
- Fire retardant material





BEYOND THE BATHROOM

The original Hookless® shower curtain was a revolution in how we hang a shower curtain. Applying that same patented Flex-On® ring technology to the requirements of the guest room, we're pleased to introduce new Hookless® room dividers and closet draperies.



HOOKLESS® CLOSET DRAPERY



Our closet draperies are the perfect privacy cover for those properties switching to a space-saving closet cabinet design. This fabric alternative to traditional mirrored doors brings an organic feeling to the closet, while being cost-conscious.

Features & Benefits:

- Fire retardant material for lasting protection
- Brushed stainless steel Flex-On® rings and double sided grommet handles
- Easy to maintain - quick install, and machine washable

Hookless® room dividers and closet draperies are currently a custom program. Contact us to speak with a member of our team about your needs. We can customize the colors and sizes to create a unique look for your property.

SUREFIT®

Sure Fit® Inc. is the nation's most trusted provider of easy to install furniture covers, slipcovers, and decorative accessories. An already popular retail brand, our foray into the hospitality market features high quality fabrics with innovative design features.



WATERPROOF MATTRESS PADS

Protect your investment while offering your guests a safe, secure, and quiet night's sleep. Sure Fit® waterproof mattress pads keep your mattress dry while drawing moisture away from the sheets. Twin size can hold up to 4.5 cups of water. The skirted pad fits mattresses up to 15" deep, while offering 4 inches of side protection. Poly rayon fill wicking eliminates piling.

Features & Benefits:

- Eliminates the crinkle sound common with vinyl mattress protection.
- Poly/cotton quilted top is cooler than a microfiber material.
- Gusset wrap over provides 4 inches of additional side protection.

Item #	Description	Dimensions
SFMP5480S	Full XL	54" x 80"
SFMP6080S	Queen	60" x 80"
SFMP7880S	King	78" x 80"



Sure Fit® stretch covers provide an attractive, affordable solution to protect furniture from general wear, while upgrading and enhancing the appearance of any banquet room. These table covers are constructed of a durable 93% polyester/7% spandex blend with inherent stain-proof, wrinkle free and flame resistant benefits.



BANQUET TABLE COVERS

Sure Fit® stretch keeps table covers in place and eliminates wrinkling. Integrated sleeves* keep table cover secure and worry free, perfect for outdoor events.



Integrated sleeves* allow tables to be easily moved without cover slipping.

Colors	Rectangular Tables (30"H)		High-Top Pub* (42"H)	Round Tables (30"H)	
	6 Foot	8 Foot	30" Dia.	48" Dia.	60" Dia.
Black	SF43815	SF43816	SF43827	SF43833	SF43834
White	SF43817	SF43818	SF43828	SF43835	SF43836
Cream	SF43819	SF43820	SF43829	SF43837	SF43838

*Integrated sleeves on rectangular and round tables only. High-top pub table covers do not include integrated sleeves. High-top pub table covers are constructed to accommodate tables with legs or disc-style base.



CLASSROOM TABLE COVERS

Ideal for meeting or conference rooms, Sure Fit® classroom table covers fit standard 18" D conference tables in 6 foot and 8 foot lengths. Integrated sleeves secure cover in place without compromising leg room.

Rectangular Classroom Tables (18"D, 30"H)		
Colors	6 Foot	8 Foot
Black	SFC1872B	SFC1896B

COFFEE SERVICE

Our coffeemakers and servers provide top quality beverage serving products to the hospitality industry. They're UL listed, and NSF certified. With craftsmanship dating back to 1945, our variety of best-in-class products is designed with your needs in mind.



COMMERCIAL STAINLESS STEEL COFFEE URNS

Introducing the newest stainless steel coffeemakers, featuring innovating style and benefits. The elevated double spigot allows for quick, versatile dispensing. Two dispensing lever options offer convenience with ease. Additional cool-touch features for safety and indicator lights take the guesswork out off the brewing process. 2-year limited warranty.

- Dual thermostats for quicker heat-up & consistent serving temperature
- Fast brew times: 60 cups – less than 45 minutes
100 cups – less than 70 minutes
- 6 ft. cord with 3 prong grounded plug, 110-120 volts



Press level for ease and convenience



Pull lever for one-hand dispensing



Indicator lights:
Green - Ready to Serve
Amber - Brewing Cycle
Red - Power On/Off



Item #	Description
54160	60 Cup Stainless Steel Coffee Maker
54100	100 Cup Stainless Steel Coffee Maker

COMMERCIAL ALUMINUM COFFEE URNS

Polished aluminum percolators brew perfect coffee and automatically hold it at the ideal serving temperature. These percolators are built for heavy-duty service and are ideal for banquet halls, conference meetings, caterers, restaurants, and health care facilities. 2-year warranty.



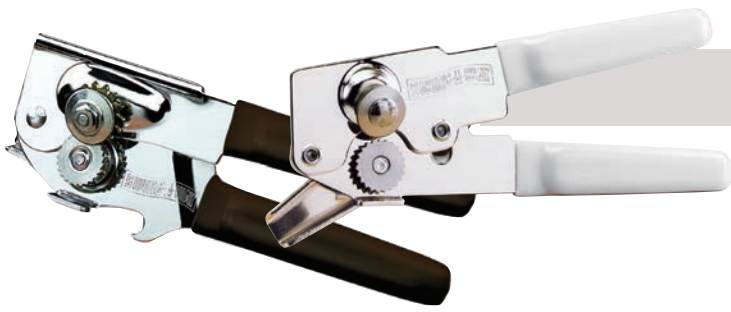
- Non-drip spigot
- Twist-to-secure cover
- Stay-cool phenolic handles and knob
- Signal light to indicate when coffee is ready
- Interior water level markings
- 3-prong grounded plug, 110-120 volts

Item #	Description
58030	30 Cup Aluminum Coffee Maker
43536	36 Cup Aluminum Coffee Maker
13500	55 Cup Aluminum Coffee Maker
33600	100 Cup Aluminum Coffee Maker



EXTENDED STAY & TIMESHARES

Providing a true home away from home is the goal of any extended stay property. Focus Products' vast assortment delivers ideal elements that help achieve this goal. From the long established brands such as Amco Houseworks® and Swing-A-Way®, you will find the ingredients to provide the comforts of home that meet the budget-conscious needs of any property.



CAN OPENERS

Since 1938, Swing-A-Way® can openers have proven to be the highest quality, most-dependable openers on the market. Professionals and consumers alike recognize and buy Swing-A-Way® for value and performance.

Item #	Description	Cs Pk
107WH	Compact Can Opener, White	6
107BK	Compact Can Opener, Black	6
107	Compact Can Opener, Assorted	6
407WK	Portable Can Opener, White	6
407BK	Portable Can Opener, Black	6
709BK	Comfort Grip Can Opener, Black	6



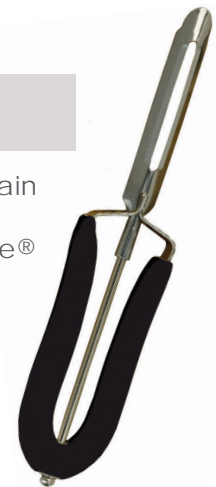
CORKSCREWS

Design and precision for easy opening. Worms are made of hardened steel so they will not bend or break and non-stick coated to pierce cork smoothly.

Item #	Description	Cs Pk
742BK	Waiter's Corkscrew, Black	6
757BK	Wing Corkscrew, Black	6

PEELER

Steel blades that maintain a sharp edge for easier peeling. The Santoprene® comfort grip is more forgiving on the hands.



Item #	Description	Cs Pk
327BK	Peeler, Black	6



PAPER TOWEL HOLDER & SOAP PUMP

Bright finish stainless steel paper towel holder fits standard and large size paper towel rolls. Brushed finished stainless steel soap pump, capacity 13.5 ounces. Clean lines match any kitchen décor.

Item #	Description	Cs Pk
KITPTH-1	Paper Towel Holder, Bright Finish	4
BS-SOPUBN	Soap Pump, Brushed Finish	6



NYLON AND STAINLESS STEEL UTENSILS

Ideal for use with non-stick cookware and other less durable surfaces, these utensils are a combination of strong and durable 18-8 stainless steel handles and non-scratching, high temperature resistant nylon. Dishwasher safe.

Item #	Description	Cs Pk
8069	Slotted Wide Blade Spatula	6
8071	Rectangular Spatula	6
8076	Pasta Fork	6
8070	Fork	6
8072	Soup Ladle, 3 oz.	6
8136	12" Locking Tongs	6
8073	Solid Spoon	6
8074	Slotted Spoon	6
8213	Silicone Spoon Spatula	6



4 PC. MEASURING SPOONS

Made from stainless steel. Handles are mirror finished, and inside bowls are brushed finished. One-piece construction with hanging holes.



Item #	Description	Cs Pk
528	1 tbsp, 1 tsp, 1/2 tsp, 1/4 tsp sizes	6

4 PC. MEASURING CUPS

Made from mirror finished stainless steel. Welded handles with hanging hole.



Item #	Description	Cs Pk
527	1 cup, 1/2 cup, 1/3 cup, 1/4 cup sizes	4



STORAGE & SHELVING

Focus Products provides innovative storage and shelving options for use throughout the hotel property. Each shelf and post is constructed from heavy-duty steel with a zinc plated undercoating. Chromate finish shelves and posts are ideal for display and dry storage areas. Our brown epoxy shelving kits provide another layer of protection in wet environments. Designed for commercial use, each shelf up to 48" in length is rated to support up to 800 lbs. of uniformly distributed weight. Shelves longer than 48" support 600 lbs.



LINEN CART KITS

Easy to order mobile carts. Includes 4 each chromate finish shelves, 4 each 63" mobile posts, enclosure panels for 3 sides, casters (2 swivel and 2 swivel with brake) and bumpers.

Item #	Shelf Size (WxL)
63" Post, Total unit height 69"	
FEMK184869CH	18" x 48"
FEMK186069CH	18" x 60"
FEMK243669CH	24" x 36"
FEMK244869CH	24" x 48"
FEMK246069CH	24" x 60"
54" Post, Total unit height 60"	
FEMK244860CH	24" x 48"



EPOXY COATED TOWEL CART & HAMPER

This towel cart and hamper are coated in brown epoxy for increased protection in wet areas. Use in the locker room or by the pool for a clean and durable towel storage solution. Towel cart includes 5 each 18" x 36" shelves, 4 each 63" stationary posts, casters (2 swivel and 2 swivel with brake) and bumpers. Hamper frame is lightweight and easy to move. Overall height 33", does not include casters. Towel cart cover and hamper bag secure easily with velcro and are water resistant. Cart cover and hamper bag sold separately.

Item #	Description	Dimensions
FLC183663BR	Towel Cart	18" x 36" x 63"
CVR183663T	Towel Cart Cover	18" x 36" x 62"
FLH182433BR	Towel Hamper Frame	18" x 24" x 33"
BAG182433T	Towel Hamper Bag	16" x 22" x 29"

Great For:

- Pool Area
- Gym/Workout Room
- Locker Room or Spa



SURE FIT® CART COVERS

Sure Fit® cart covers keep linens and products stored on the cart clean and free of dust. Cart covers are water resistant to keep your items dry. Cart covers feature easily accessible double door front closures that can be secured open or closed.

Item #	Description	Fits Carts Sized
CVR244854T	Linen Cart Cover	24" x 48" x 54"
CVR183663T	Towel Cart Cover	18" x 36" x 62"



CHROMATE FINISH MOBILE SHELVING KITS

The open wire design minimizes the amount of dirt and dust that accumulates on the shelves, promotes greater circulation of air and products are easier to see and readily accessible. Kit includes chromate finish shelves and chromate finish 63" posts. Overall height 69". Includes 4 each polyurethane casters (2 swivel/2 swivel with brake) and 4 revolving bumpers.

4 Shelf Models		5 Shelf Models	
Item #	Shelf Size (WxL)	Item #	Shelf Size (WxL)
FMK1836694CH	18" X 36"	FMK1836695CH	18" X 36"
FMK1848694CH	18" X 48"	FMK1848695CH	18" X 48"
FMK1860694CH	18" X 60"	FMK1860695CH	18" X 60"
FMK2136694CH	21" X 36"	FMK2136695CH	21" X 36"
FMK2148694CH	21" X 48"	FMK2148695CH	21" X 48"
FMK2160694CH	21" X 60"	FMK2160695CH	21" X 60"
FMK2436694CH	24" X 36"	FMK2436695CH	24" X 36"
FMK2448694CH	24" X 48"	FMK2448695CH	24" X 48"
FMK2460694CH	24" X 60"	FMK2460695CH	24" X 60"

CHROMATE FINISH STATIONARY SHELVING KITS

Easy to order kits provide a complete shelving unit in a single box. Each kit contains 4 shelves with locking plastic sleeves & 4 each 74" stationary posts.

Item #	Description
FK183674CH	Kit includes 4 each 18" x 36" shelves and 4 each 74" split posts
FK184874CH	Kit includes 4 each 18" x 48" shelves and 4 each 74" split posts
FK243674CH	Kit includes 4 each 24" x 36" shelves and 4 each 74" split posts
FK244874CH	Kit includes 4 each 24" x 48" shelves and 4 each 74" split posts



CREATE CUSTOM SHELVING

Combine chromate shelves and posts to create a shelving system customized to your space and needs. Add casters for a mobile solution. Enclosure panels and security cages are also available in a variety of sizes. Our team can help you determine the correct sizes.

SHELVES, CHROMATE FINISH

Four sets of plastic sleeves are included with each shelf.

Item #	Shelf Size (WxL)
FF1824C	18" x 24"
FF1836C	18" x 36"
FF1848C	18" x 48"
FF1860C	18" x 60"
FF2148C	21" x 48"
FF2160C	21" x 60"
FF2436C	24" x 36"
FF2448C	24" x 48"
FF2460C	24" x 60"

POSTS, CHROMATE FINISH

Please specify either stationary or mobile post design when ordering.

Stationary Post Item #	Mobile Post Item #	Height
FG054C	FGN054C	54"
FG063C	FGN063C	63"
FG074C	FGN074C	74"

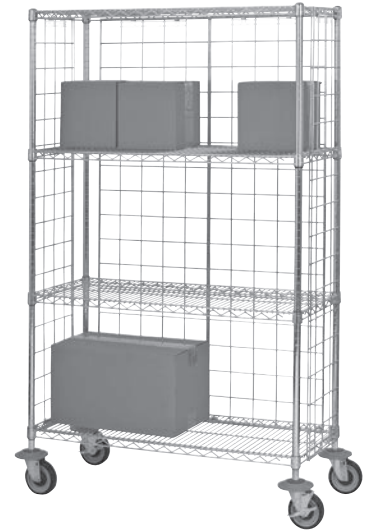


STATIONARY OR MOBILE POSTS?

- Stationary posts come with leveling feet and can convert to a mobile unit with the addition of threaded casters. These zinc plated feet allow you to keep shelving unit level on uneven flooring.
- Threaded casters have a load rating of 200 lbs each. Total weight capacity of 800 lbs.
- Mobile posts are designed for use with stem casters only.
- Stem casters have a load rating of 300 lbs each. Total weight capacity of 1200 lbs.

ENCLOSURE PANELS FOR LINEN CARTS

Item #	Size (WxH)	Fits Post Height	Grid Opening
FEP1854CH	12-5/16" x 50-3/4"	54"	3" x 3-5/8"
FEP1863CH	12-5/16" x 59-5/8"	63"	3" x 3-3/4"
FEP1874CH	12-5/16" x 70-3/4"	74"	3" x 3-3/4"
FEP2454CH	18-3/8" x 50-3/4"	54"	3-5/8" x 3-5/8"
FEP2463CH	18-3/8" x 59-5/8"	63"	3-5/8" x 3-3/4"
FEP2474CH	18-3/8" x 70-3/4"	74"	3-5/8" x 3-3/4"



Ordering Guide for Enclosure Panels

Ends - Panels required for EACH end according to shelf widths as follows:

Nominal Post Height	18" Nominal Shelf Width	21" Nominal Shelf Width	24" Nominal Shelf Width	30" Nominal Shelf Width
54"	(1) FEP1854CH	(1) FEP1854CH	(1) FEP2454CH	(2) FEP1854CH
63"	(1) FEP1863CH	(1) FEP1863CH	(1) FEP2463CH	(2) FEP1863CH
74"	(1) FEP1874CH	(1) FEP1874CH	(1) FEP2474CH	(2) FEP1874CH

Backs - Requires multiple panels IN QUANTITIES SHOWN for specific lengths:

Nominal Post Height	36" Nominal Shelf Length	48" Nominal Shelf Length	60" Nominal Shelf Length	72" Nominal Shelf Length
54"	(1) FEP1854CH & (1) FEP2454CH	(2) FEP1854CH & (1) FEP2454CH	(3) FEP2454CH	(1) FEP1854CH & (3) FEP2454CH
63"	(1) FEP1863CH & (1) FEP2463CH	(2) FEP1863CH & (1) FEP2463CH	(3) FEP2463CH	(1) FEP1863CH & (3) FEP2463CH
74"	(1) FEP1874CH & (1) FEP2474CH	(2) FEP1874CH & (1) FEP2474CH	(3) FEP2474CH	(1) FEP1874CH & (3) FEP2474CH

HEAVY-DUTY POLYURETHANE STEM CASTERS

5" diameter, 1 1/4" face, heavy-duty polyurethane non-marking casters turn your shelving unit into a mobile solution. Each caster includes a 5" revolving donut bumper at no additional charge. Each caster has a load rating of 300 lbs.

When ordering these casters specify with mobile posts.

Item #	Description	Pack
FSCAST5	Set of 4 each 5" stem casters (2 swivel & 2 swivel/brake) w/bumpers	4 sets
FSCAST5B	5" swivel stem caster with brake and bumper	4
FSCAST5C	5" swivel stem caster and bumper	4



HEAVY-DUTY POLYURETHANE THREADED CASTERS

Designed for use with posts with leveling feet, these 5" diameter, 1 1/4" Each caster includes a 5" revolving donut bumper at no additional charge. Each caster has a load rating of 200 lbs.

When ordering these casters specify with stationary posts.

Item #	Description	Pack
FTCAST5	Set of 4 each 5" threaded casters (2 swivel & 2 swivel/brake) w/bumpers	4 sets





SECURITY CAGES

Provides protection for valuable products from loss and minimizes shrinkage. Locking bar on front door hooks both the top and bottom shelf for greater security. Security cages can be attached to stationary or mobile shelving units for greater flexibility.

Security Cages Only

Size	Item #
18" x 36" x 63"	FSEC183663
18" x 60" x 63"	FSEC186063
24" x 36" x 63"	FSEC243663
24" x 48" x 63"	FSEC244863

Stationary Security Cages - Chromate Finish

Size	2 Shelf Item #	3 Shelf Item #	4 Shelf Item #
18" x 36" x 63"	FSSEC1836	FSSEC18363	FSSEC18364
18" x 48" x 63"	FSSEC1848	FSSEC18483	FSSEC18484
18" x 60" x 63"	FSSEC1860	FSSEC18603	FSSEC18604
24" x 36" x 63"	FSSEC2436	FSSEC24363	FSSEC24364
24" x 48" x 63"	FSSEC2448	FSSEC24483	FSSEC24484
24" x 60" x 63"	FSSEC2460	FSSEC24603	FSSEC24604

Mobile Security Cages - Chromate Finish

Size	2 Shelf Item #	3 Shelf Item #	4 Shelf Item #
18" x 36" x 63"	FMSEC1836	FMSEC18363	FMSEC18364
18" x 48" x 63"	FMSEC1848	FMSEC18483	FMSEC18484
18" x 60" x 63"	FMSEC1860	FMSEC18603	FMSEC18604
24" x 36" x 63"	FMSEC2436	FMSEC24363	FMSEC24364
24" x 48" x 63"	FMSEC2448	FMSEC24483	FMSEC24484
24" x 60" x 63"	FMSEC2460	FMSEC24603	FMSEC24604

Each kit contains two front panels, two side panels, two back panels, back panel assembly hardware and top loop assembly hardware.



CLEAR POLYPROPYLENE SHELF INLAYS

Clear plastic mats provide greater stability for items on shelves, while still letting light through.

Item #	Size	Pack
FPSL2436CL	24" x 36"	4
FPSL2448CL	24" x 48"	4
FPSL2460CL	24" x 60"	4

REVOLVING DONUT BUMPER

The 5" diameter non-marking rubber bumpers fit snugly over posts and minimize damage to walls and furniture. 4 to a pack.

Item #	Description	Pack
FBUMP5	5" PVC Donut Bumper	1



REPLACEMENT PLASTIC SLEEVES

Each package contains 4 sets. One package required per shelf.

Item #	Description	Pack
30058	Replacement Sleeves	12 pkgs



Shower Curtain Items	Page
6-GAUGE VINYL HOOKED™ SHOWER CURTAIN	29
6-GAUGE VINYL VISION HOOKED™ SHOWER CURTAIN	28
8-GAUGE BASIC VINYL HOOKED™ SHOWER CURTAIN	29
8-GAUGE PIN DOT HOOKLESS® SHOWER CURTAIN	20
8-GAUGE VISION HOOKLESS® SHOWER CURTAIN	20
10-GAUGE BASIC VINYL HOOKED™ SHOWER CURTAIN	29
ADA SIZE PLAINWEAVE HOOKLESS® SHOWER CURTAIN	21
ALEXANDRIA HOOKLESS® SHOWER CURTAIN	23
BASIC NYLON HOOKED™ SHOWER CURTAIN	28
BASIC POLYESTER HOOKED™ SHOWER CURTAIN	30
BROOKS HOOKLESS® SHOWER CURTAIN	10
CORAL HOOKLESS® SHOWER CURTAIN	7
DAYTONA HOOKLESS® SHOWER CURTAIN	23
DERBY ROLLERBALL HOOKS	27
DEVAN HOOKLESS® SHOWER CURTAIN	8
DOUBLE H HOOKLESS® SHOWER CURTAIN	10
DOUBLE ROLLERBALL HOOKS	27
EMBOSSSED MOIRE HOOKLESS® SHOWER CURTAIN	18
ENGLEWOOD HOOKED™ SHOWER CURTAIN	27
ENGLEWOOD HOOKLESS® SHOWER CURTAIN	19
ESCAPE HOOKED™ SHOWER CURTAIN	27
ESCAPE HOOKLESS® SHOWER CURTAIN	12
ILLUSION HOOKLESS® SHOWER CURTAIN	16
IT'S A SNAP!® LINER, POLYESTER	15
IT'S A SNAP!® LINER, PEVA	15, 23
IT'S A SNAP!® LINER, REPET	15, 23
LITCHFIELD HOOKLESS® SHOWER CURTAIN	18
MADISON HOOKLESS® SHOWER CURTAIN	11
MINI CHECKERBOX HOOKED™ SHOWER CURTAIN	27
MINI WAFFLE HOOKLESS® SHOWER CURTAIN	14
MYSTERY HOOKLESS® SHOWER CURTAIN	16
NYLON HOOKLESS® SHOWER CURTAIN	20
PEVA HOOKLESS® SHOWER CURTAIN	23
PIQUE WAFFLE HOOKLESS® SHOWER CURTAIN	14
PLAINWEAVE HOOKLESS® SHOWER CURTAIN	19
POLY PREMIUM HOOKED™ SHOWER CURTAIN	30
REFLECTION HOOKLESS® SHOWER CURTAIN	14
SHIMMY SQUARE HOOKLESS® SHOWER CURTAIN	9
STALL SIZE: 10-GA VINYL HOOKED™ SHOWER CURTAIN	29
STALL SIZE 10-GA VINYL HOOKLESS® SHOWER CURTAIN	21
STALL SIZE LITCHFIELD HOOKLESS® SHOWER CURTAIN	21
STRATUS HOOKLESS® SHOWER CURTAIN	11
THE MAJOR HOOKLESS® SHOWER CURTAIN	17
TREE BRANCH HOOKLESS® SHOWER CURTAIN	7
VICTORIAN STRIPE HOOKLESS® SHOWER CURTAIN	19
VIEW FROM TOP HOOKLESS® SHOWER CURTAIN	17
WAVES HOOKLESS® SHOWER CURTAIN	8
WELLINGTON HOOKLESS® SHOWER CURTAIN	9

Shower Rod Items	Page
THE ARC® COVER PLATES	35
THE ARC® SHOWER BAR	35
THE ARC® WALL BRACKETS	35
THE CRESCENT ROD®	32
THE CRESCENT ROD® COVER PLATES	32
THE CRESCENT ROD® SWIVEL BRACKETS	32
THE CRESCENT™ CLOTHESLINE BRACKETS	33
THE CRESCENT™ CLOTHESLINE ROD	33
THE DOUBLE OVAL™ ROD	33
THE OVAL™ CURVED ROD	34
THE OVAL™ ROD COVER PLATES	34

Collections Items	Page
ACRYLIC ACCESSORIES	41
BASIC COLLECTION	38
CERAMIC ACCESSORIES	41
HAMILTON COLLECTION	40
MS RESIN SOAP DISHES	41
PARKER COLLECTION	37
PEWTER VEIL COLLECTION	39
PREMIER COLLECTION	39
SOAP PUMP	41, 50
SOHO COLLECTION	38
SPA COLLECTION	40
WASTEBASKET LINERS	41
ZEN COLLECTION	37

Guest Room Items	Page
BRUSHED BARWARE	43
MELROSE GUEST ROOM COLLECTION	42
SPA BARWARE	43
SURE FIT® MATTRESS PADS	46
WASTEBASKET LINERS, MELROSE	42

Custom Order Items	Page
ESCAPE CUSTOM HOOKLESS® CURTAIN	13
CUSTOM HOOKLESS® CURTAIN	24, 25
HOOKLESS® CLOSET DRAPERY	45
HOOKLESS® ROOM DIVIDERS	44
MELROSE EMBOSSSED ROOM ACCESSORIES	42

Banquet & Conference Items	Page
BANQUET TABLE COVERS BY SURE FIT®	47
CLASSROOM TABLE COVERS BY SURE FIT®	47
COFFEE URNS	48

Extended Stay Items	Page
CAN OPENERS	50
CORKSCREWS	50
MEASURING CUPS	51
MEASURING SPOONS	51
PAPER TOWEL HOLDER	50
PEELER	50
SOAP PUMP	41, 50
UTENSILS, NYLON & STAINLESS STEEL	51

Storage & Transportation Items	Page
CASTERS, HEAVY-DUTY POLYURETHANE STEM	56
CASTERS, HEAVY-DUTY POLYURETHANE THREADED	56
ENCLOSURE PANELS, CHROMATE FINISH	56
LINEN CART COVER	53
LINEN CART KITS, CHROMATE FINISH	53
MOBILE SHELVING KITS, CHROMATE FINISH	54
POSTS, CHROMATE FINISH	55
REPLACEMENT PLASTIC SLEEVES	57
REVOLVING DOUNT BUMPER	57
SECURITY CAGES	57
SHELF INLAYS, CLEAR POLYPROPYLENE	57
SHELVES, CHROMATE FINISH	55
STATIONARY SHELVING KITS, CHROMATE FINISH	54
TOWEL CART COVER	53
TOWEL CART, EPOXY COATED	53
TOWEL HAMPER BAG	53
TOWEL HAMPER FRAME, EPOXY COATED	53



USE & CARE



FABRIC CURTAINS

Daily: Shake off water and let hang freely outside the tub to dry.

Care: Machine wash with other Hookless® shower curtains only. Deattach liner to launder seperately if included. Use only non-chlorine bleach when needed. Tumble dry on low. Iron on lowest setting as needed. If the curtain has a vinyl window, DO NOT PLACE IN DRYER.



VINYL & PEVA CURTAINS

Daily: Shake off water and let hang freely outside the tub to dry.

Care: Hand wash in warm soapy water, NEVER machine wash as the product could become permanently damaged. DO NOT PLACE IN DRYER.



IT'S A SNAP!® LINER

Care: Detach liner from curtain and follow care instructions above for appropriate material type – fabric or PEVA.



SURE FIT® TABLE COVERS

Care: Machine wash in cold water with like colors. Use only non-chlorine bleach when needed. Tumble dry on low. DO NOT IRON.

SURE FIT® MATTRESS PADS

Care: Machine wash warm 98°F or lower. Do not bleach. Tumble dry on low. Avoid excessive heat. Remove promptly. DO NOT IRON.



COLLECTIONS

Care: Wipe product down with a clean damp towel only. NEVER use abrasive chemicals or decorative finish may become damaged.



SHOWER RODS

Care: Wipe product down with a clean damp towel only. DO NOT USE HARSH CLEANING CHEMICALS.

Installation: Certain 'wall mounting hardware' has been provided for fixing the brackets to most common wall types, please only use wall mounting hardware recommended for the type of wall you are fixing to. Please consult a contractor if advice is needed.





888-854-6367
info@motelsupplies.com